

AZENIS FK520 FEXM NEO-T01 RUNFLAT

From Racetrack to Road - The Latest Generation

FEATURES

- Precise handling ensuring outstanding stability and control at all speeds
- Enhanced safety - shorter braking distances in wet and dry conditions
- Comfortable, cushioned ride, optimised rolling resistance and lower noise
- Aerodynamic sidewall design with new Nano-Black lettering

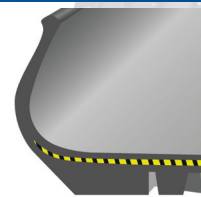


ARAMID LAYER REINFORCEMENT

Product Feature: A new reinforced layer consisting of Aramid material

Function: Ultra-crisp handling

Benefit: Enhanced cornering dynamics and stability even at high speeds

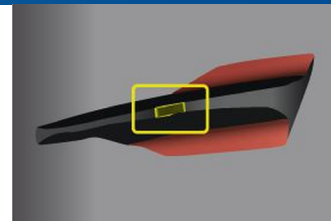


DIAMOND-CUT EDGES AND SILENCING DIMPLES

Product Feature: Diamond-cut edges with silencing dimple adapted in all lateral shoulder grooves

Function: Improved ground contact and minimised noise

Benefit: Outstanding cornering and optimum dry braking

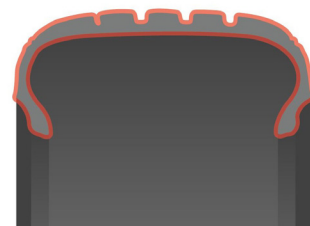


LIGHTWEIGHT CONSTRUCTION

Product Feature: Lightweight design

Function: Up to 10% weight reduction due to optimised design and construction

Benefit: Lightweight tyre to conserve resources reduce undamped mass and improve rolling resistance



tyres4u.co.nz

 0800 888 973

AZENIS FK520 FEXM NEO-T01 RUNFLAT

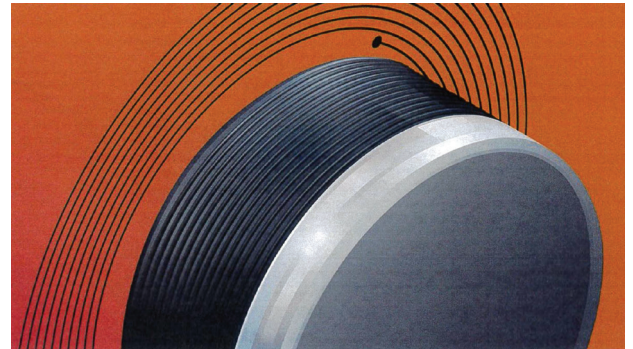


RIM INCH	T4U CODE	SIZE	LOAD INDEX	SPEED RATING	DESCRIPTION
18"	353390	255/40R18	99	Y	RUNFLAT - FEXM NEO-T01 R
	352947	225/45R18	95	Y	RUNFLAT - FEXM NEO-T01 R
19"	353119	275/35R19	100	Y	RUNFLAT - FEXM NEO-T01 R
	353386	225/40R19	93	Y	RUNFLAT - FEXM NEO-T01 R

NEO-T01 PRODUCTION PROCESS

NEO-T01 is a recently developed Falken production system for manufacturing ultra-high-precision runflat tyres. In NEO-T01 each tyre is built around a precision moulded metal core known as a 'former' in the exact shape and size of the finished tyre's interior. What makes this method so special is that the tyres are manufactured using a 'ribbon' method, which wraps the tread and sidewall material around the former to extremely high-precision specifications without any overlapping or joins, and without the need for additional manufacturing tolerances. The dimensions of the raw tyre correspond exactly to those of the completed product; there is no deformation of the compound during vulcanisation. All the components are assembled fully automatically by the computer-driven system. NEO-T01 thus raises the bar of quality and consistency in the serial production of premium tyres.

NEO-T01 production process technology has played a big role in developing our extended mobility tyres, with the manufacturing method in use at our production facility in Shirakama, Japan. With the ability to produce lighter and more dimensionally consistent tyres.



RUNFLAT TECHNOLOGY

If a conventional tyre loses air, its shape begins to deform on the wheel rim, generating heat that destroys the tyre within a very short time. As early as 1970, Sumitomo Rubber Industries found a solution to combat the problem, and launched the world's first runflat tyre with 'limp-home mode'. Runflat tyres have reinforced sidewalls that reduce deformation if the tyre sustains damage or a puncture, they can thus continue to be driven for at least a further 80km at a maximum speed of 80/km/h. Falken Runflat Tyres combine this 'limp-home' mode with top performance in all areas. Incidentally, manufacturers specify that runflat tyres must be used with a tyre pressure monitoring system, because the tyres are so effective that drivers may not actually notice their tyre has a puncture.

(Vehicle must have a tyre pressure monitoring system).

Our NEO-T01 manufacturing process is used to create a new generation of extended mobility technology that offer the benefits of runflat tyres with added refinement and lighter weight. These tyres are identifiable by a distinct FEXM logo on the sidewall.



tyres4u.co.nz

☎ 0800 888 973

FALKEN
ON THE PULSE