

GI-388 TRUCK TYRE

Heavy Load Carrying Capacity On and Off the Highway

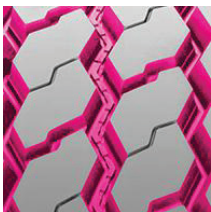
The **GI-388** is specifically designed for heavy load applications such as waste haulers and sanitation vehicles utilizing front loaders that demand 10,000 lbs + load carrying capacity. Well-suited for both on and off-highway use, the GI-388 comes equipped with casing protection features, long mileage capability, and a cut and chip resistance compound. The advance tread compound resists the effects of tread chipping in high-scuff applications, lowering maintenance costs.



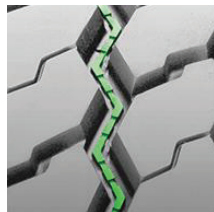
FEATURES AND BENEFITS

- Deeper tread all position tyres designed for on and off road service.
- Stone ejectors in the centre groove.

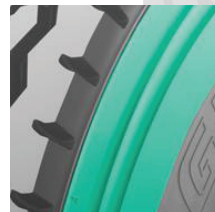
On/Off Application



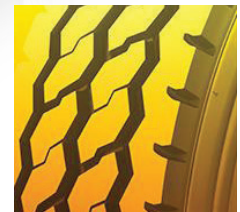
UNDER-TREAD RUBBER THICKNESS
protects the belt package and casing.



STONE DEFENSE FEATURES
effectively minimize rock and pebble packing to protect the belt package and casing from stone drilling.



CURB GUARD ON SIDEWALLS
protects the casing from in-service damage.



ADVANCE TREAD COMPOUND
resists effects of tread chipping during operation in high-scuff applications.

GI-388 TRUCK TYRE



SIZE	PLY RATING	LOAD INDEX & SPEED SYMBOL	TL	OVERALL DIAM. (MM)	SECTION WIDTH (MM)	RIM WIDTH (CODE)		TREAD DEPTH (MM)
						MEASURING	APPROVED	
7.50 R16	14	123/121L		808	215	6.0	5.5 - 6.5	13.2
265/70 R19.5		143/141J	TL	878	256	7.50	6.75 - 8.25	14.7
275/70 R22.5		148/145K	TL	973	281	8.25	7.50 - 8.25	18.0
11R 22.5		148 / 145K	TL	1063	286	8.25	7.50, 8.25	20.6
315/80 R22.5		156/150K	TL	1083	312	9.00	9.00, 9.75	19.1



tyres4u.co.nz

 0800 888 973

FALKEN
ON THE PULSE